

# 2024

## RATES & INFORMATION

Nestled in the ancient dolomite ridge of Madikwe Game Reserve along an abounding Elephant game path, The Royal Madikwe Luxury Safari Lodge wraps around one of the busiest waterholes in the reserve, with complete privacy and a backdrop of endless views over the vast plains.

An unforgettable experience is specially curated for each of our guests to immerse them into their wilderness surroundings, fostering a deep connection to nature and an exploration of our unique culture.

The unique setting and abundance of wildlife right here on our doorstep is what sets Royal Madikwe apart from any other Safari experience. An exclusive boutique style property offering ultra-luxurious accommodation on a per person sharing basis to a maximum of seventeen guests in three beautifully appointed suites as well as two private villa's, namely the two-bedroom Royal Villa overlooking our private waterhole and the three-bedroom Sovereign House perfect for larger or multi-generational families or groups of friends.



**THE ROYAL MADIKWE**  
LUXURY SAFARI LODGE



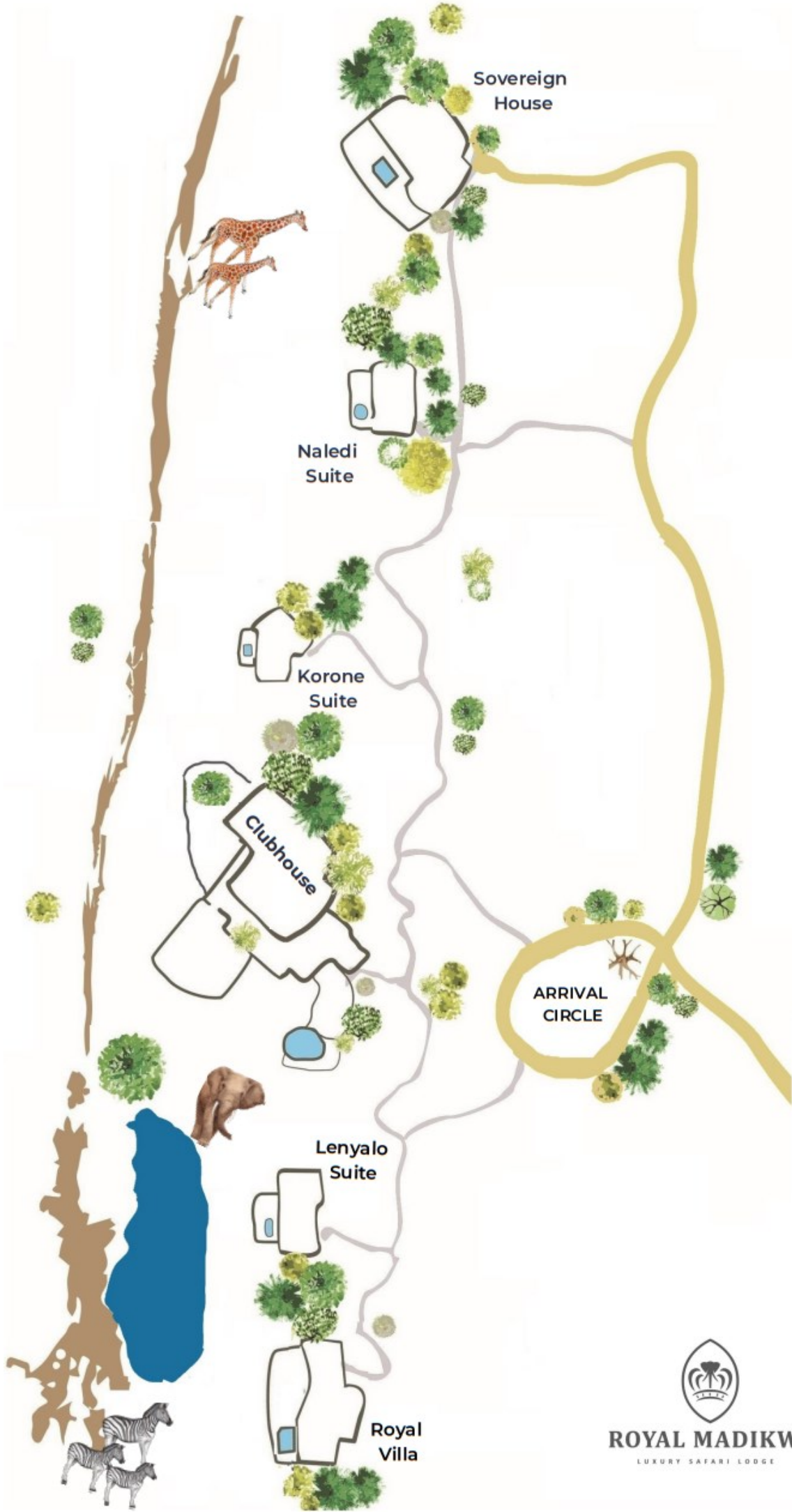
# THE ROYAL MADIKWE

LUXURY SAFARI LODGE

---

## CONTENTS

Property Layout	1
Accommodation Comparison	2
2024 Rack Rates	3
2024 Special Offers	4
Payment Terms / Additional Fee's	5-6
Reservation & Child Policies	7
Activities & Inclusions	8
Air Transfer Options	9
Road Transfer Options	10
Map and Directions	11
Seasons and Packing Guidelines	12
Healthcare and Documentation	13
Contact Details	14



Sovereign House

Naledi Suite

Korone Suite

Clubhouse

ARRIVAL CIRCLE

Lenyalo Suite

Royal Villa



**ROYAL MADIKWE**  
LUXURY SAFARI LODGE



# THE ROYAL MADIKWE

LUXURY SAFARI LODGE

## ACCOMMODATION COMPARISON

	NALEDI SUITE	KORONE SUITE	LENYALO SUITE	ROYAL VILLA	SOVEREIGN HOUSE
ROOM SIZE <i>Including deck...</i>	110m <sup>2</sup>	94m <sup>2</sup>	115m <sup>2</sup>	380m <sup>2</sup>	438m <sup>2</sup>
BEDROOMS	1	1	1	2	3
BATHROOMS	1	1	1	2	3.5
PRIVATE DECK & PLUNGE POOL	√	√	√	√	√
VIEW	Waterhole & Landscape	Waterhole & Landscape	Waterhole & Landscape	Waterhole & Landscape	Waterhole & Landscape
PRIVATE VEHICLE & GUIDE	x	x	x	√ <i>Included</i>	√ <i>Included</i>
PERSONAL CHEF & BUTLER	x	x	x	√ <i>Included</i>	√ <i>Included</i>
MAX OCCUPANCY	2 Guests	2 Guests	2 Guests	5 Guests	6 Guests
MIN STAY	2 Nights	2 Nights	2 Nights	2 Nights	2 Nights



# THE ROYAL MADIKWE

LUXURY SAFARI LODGE

2024 Rack Rates & Information  
VALID : 1February 2024 - 31 January 2025

ACCOMMODATION	RACK RATES	FAST FACTS
Naledi Suite	<b>18,000</b> ppns <b>27,000</b> single	<p>MAX OCCUPANCY 2 Guests            ROOM TYPE Luxury Suite (110m<sup>2</sup> deck inclusive)            BED TYPE 2 Single XL (Convert to King)            DISTANCE 120m from Clubhouse</p> <p>TIP : <i>Book in conjunction with Sovereign House for larger families</i></p>
Korone Suite	<b>18,000</b> ppns <b>27,000</b> single	<p>MAX OCCUPANCY 2 Guests            ROOM TYPE Luxury Suite (94m<sup>2</sup> deck inclusive)            BED TYPE 2 Single XL (Convert to King)            DISTANCE 40m from Clubhouse</p> <p>TIP : <i>Closest suite to the Clubhouse</i></p>
Lenyalo Suite	<b>25,000</b> ppns <b>37,500</b> single	<p>MAX OCCUPANCY 2 Guests            ROOM TYPE Honeymoon Suite (115m<sup>2</sup> deck inclusive)            BED TYPE 1 King XL (Four Poster Bed)            DISTANCE 60m from Clubhouse</p> <p>TIP : <i>Incredible water hole view</i></p>
Royal Villa	<b>132,000</b> unit (4 pax) <b>29,700</b> Additional Guest	<p>MAX OCCUPANCY 5 Guests            ROOM TYPE Family Villa (380m<sup>2</sup> deck inclusive)            BED TYPE 1 King XL (Four Poster Bed)            2 Single XL (Convert to King or add bed)            DISTANCE 90m from Clubhouse</p> <p>TIP : <i>Incredible water hole view. Private Vehicle, Guide, Chef &amp; Butler included</i></p>
Sovereign House	<b>132,000</b> unit (4 pax) <b>33,000</b> Additional Guest	<p>MAX OCCUPANCY 6 Guests            ROOM TYPE Family House (438m<sup>2</sup> deck inclusive)            BED TYPE 6 Single XL (Convert to King)            DISTANCE 150m from Clubhouse</p> <p>TIP : <i>Incredible 180° views, situated along ancient Elephant path Private Vehicle, Guide, Chef &amp; Butler included</i></p>
Exclusive Use Max : 17 guests	<b>481,700</b> (17 guests)	Exclusive use of the entire property.



# THE ROYAL MADIKWE

LUXURY SAFARI LODGE

---

## 2024 SPECIAL OFFER'S

### ONE MORE NIGHT IN THE WILDERNESS

Available for stays in the ROYAL VILLA and SOVEREIGN HOUSE only.

**BLOCK OUT DATES:** April, August, October & December

~ Pay 4, Stay 5 Nights

~ Pay 6, Stay 8 Nights

The standard terms and conditions apply.

This special offer may not be combined with any other offer.

### HONEYMOON SAFARI PACKAGE

Available for stays in the Naledi Suite, Korone Suite & Lenyalo Suite only.

**STAY DATES :** March, May, June, September, November & January

**Naledi Suite** ~ ZAR 190,500 per couple

**Korone Suite** ~ ZAR 190,500 per couple

**Lenyalo Suite** ~ ZAR 253,500 per couple

The standard terms and conditions apply.

This special offer may not be combined with any other offer.

This offer is available per couple per stay, based on a 5 nights stay in one of our luxurious suites.

**INCLUDES :** 5 Nights Luxury Accommodation, Return flights between Johannesburg and Royal Madikwe Western Airstrip, A 45 Minute Couples Massage, Limitless South African Bubbles, Romantic Turndowns and a Private Romantic Dinner including a bottle of French Champagne.



# THE ROYAL MADIKWE

LUXURY SAFARI LODGE

---

## RESERVATION TERMS AND CONDITIONS

### DEPOSIT

We require a 20% non-refundable deposit, on the total invoiced amount, within 10 days of reservation confirmation. The Royal Madikwe reserves the right to cancel the reservation if the deposit is not received within 10 days. The balance of the payment is required 60 days prior to arrival. Bookings made within 60 days of arrival are payable in full immediately.

### PAYMENT

Our rates are quoted and payable in ZAR (South African Rand) and include 15% VAT. We accept both credit card (American Express | MasterCard | Visa) and bank transfer as methods of payment. Please use your booking number (RM00...) as the reference when making payment via bank transfer.

All extras must be settled directly at the lodge on departure.

We accept both cash (South African Rand) and credit card (American Express | MasterCard | Visa) as means of payment at the lodge.

All rates quoted, but not limited to, Accommodation, Transfers, Additional Specialized Activities, Park Entry / Landing Fee, Conservation Levy are valid at the time of booking, but until such time as full and final payment has been received, the price is subject to change without prior notice.

### CANCELLATION

Should a cancellation be received 61 days prior to due arrival date, a 20% Administration Fee will be charged. Should a cancellation be received 31-60 days prior to due arrival date, a 50% cancellation penalty will be charged. Should a cancellation be received within 30 days of due arrival date, a 100% cancellation penalty will be charged.

The Cancellation fee applies to the total invoiced amount, including but not limited to, Accommodation, Air / Road Transfers and Additional Specialized Activities. In the event of late arrival or premature departure the full extent of the stay, as originally booked and confirmed, will be charged.



# THE ROYAL MADIKWE

LUXURY SAFARI LODGE

---

## RESERVATION TERMS AND CONDITIONS

### CHECK-IN / CHECK-OUT POLICY

Check-in time is 14h00 and check-out time is 11h00.

Guests arriving/departing via road transfer or self-drive vehicle, please note that Madikwe Game Reserve entry gates strictly open at 06h00 and are locked at 18h00 and will not be opened outside of these times.

Transfers between the lodge and Royal Madikwe Western Airstrip are complimentary at the preferred scheduled flight times. For an earlier check-in or later check out a surcharge may be applicable for transfers between the lodge and Royal Madikwe Western Airstrip for Private Charters / or Shuttle Flights arriving earlier than 11h00 or departing later than 13h00 during, but not limited to, the months of May, June, July and August. Please note that an earlier check-in or later check-out is only permitted by special arrangement.

### TRAVEL INSURANCE POLICY

We strongly advise taking out personal travel insurance in order to safeguard against cancellation penalties as detailed above, which should also include insurance for personal effects, personal accident as well as medical emergencies and emergency travel expenses.

### ADDITIONAL FEE'S AND LEVIE 'S

**RESERVE ENTRY FEE'S** - A compulsory fee charged per person once off and is dependent on mode of travel on arrival, i.e. if you arrive via shuttle flight you will be liable for the Landing Fee.

GATE ENTRY FEE - ZAR 200 per adult | ZAR 90 per child (3-12yrs) | No charge for children under 2 yrs

LANDING FEE - ZAR 270 per adult | ZAR 170 per child (3-12yrs) | No charge for children under 2yrs

**CONSERVATION LEVY** - A compulsory fee charged per person per night which contributes towards conservation, anti-poaching initiatives and community development.

ZAR 200 per adult | ZAR 100 per child (3-12yrs) | No charge for children under 2 yrs

### RATE PARITY POLICY

The Royal Madikwe adheres to Rate Parity and in keeping with Industry Standards we strongly discourage discounting our Rack Rates in any form of online media when promoting our property.





# THE ROYAL MADIKWE

LUXURY SAFARI LODGE

---

## RESERVATION POLICIES

### CHILD POLICY

Children of all ages are welcome at Royal Madikwe. Children under the age of 6 years are not permitted on the regular scheduled Safari's. Please be sure to enquire about a private vehicle for your family safari. We do have a limited number of vehicles available at an additional cost.

Taking the time to reimagine a wild adventure from a child's perspective allows us to tailor our children's' program to suit their individual needs, because just like no two cheetah's have the same spots, no two children are alike. So, yes, we do have a wonderful children's program, but it does not follow a strict timetable. We reinvent our children's program daily to immerse your child into their natural surroundings and inspire them to really look and learn about this magical environment around them.

Track and Sign & Spoor casting with plaster of paris | Seasonal movie night under the stars | Beading lessons | Nature walks around camp | Archery | Nature Centered Arts & Crafts | African Stories with Hot Chocolate & Cookies | Impala Dung Spitting Competitions

A childminding service is available by prior arrangement at an additional cost.

Get in touch for special arrangements regarding children's birthdays as we do so enjoy a wild affair!

### ADDITIONAL ACTIVITIES

Royal Madikwe offers a variety of *UNFORGETTABLE EXPERIENCES* bookable in advance via Royal Madikwe Reservations at [reservations@royalmadikwe.com](mailto:reservations@royalmadikwe.com). Get in touch for a personalized quote and more information about these unique and culturally immersive wilderness experiences.

In the event of an additional activity being cancelled due to bad weather, or any other unforeseen reason beyond our control, it is understood that a 100% cancellation penalty may apply as many of these activities are outsourced to small local businesses and support the surrounding communities.



# THE ROYAL MADIKWE

LUXURY SAFARI LODGE

---

## ROYAL VILLA ~ SOVEREIGN HOUSE

---

### INCLUSIONS

Luxury Accommodation  
Breakfast, Lunch / High-Tea & Dinner  
A Selection of Local Beverages  
Selected Game Drive Beverages and Snacks  
Transfers to/from Royal Madikwe Western Airstrip  
2 Game Drives Daily with Private Guide & Vehicle  
Personal Chef & Butler  
Children's Program  
Laundry Service

### EXCLUSIONS

All Other Beverages and Cigars  
Optional Additional Activities  
Safari Boutique Purchases  
Reserve Entry/ Landing Fee's  
Conservation Levy  
Child Minding Service  
Nature Walk (16—60 yrs)  
Gratuities

## NALEDI SUITE ~ KORONE SUITE ~ LENYALO SUITE

---

### INCLUSIONS

Luxury Accommodation  
Breakfast, Lunch / High-Tea & Dinner  
A Selection of Local Beverages  
Selected Game Drive Beverages and Snacks  
Transfers to/from Royal Madikwe Western Airstrip  
2 Game Drives Daily

### EXCLUSIONS

All Other Beverages and Cigars  
Laundry Service & Gratuities  
Optional Additional Activities  
Safari Boutique Purchases  
Reserve Entry/ Landing Fee's  
Conservation Levy  
Private Vehicle  
Nature Walk (16—60 yrs)



# THE ROYAL MADIKWE

LUXURY SAFARI LODGE

## PRIVATE AND SHARED AIR TRANSFER OPTIONS

Please contact [reservations@royalmadikwe.com](mailto:reservations@royalmadikwe.com) for a personalized quote.

### SHARED SHUTTLE FLIGHT

Guests will be met in the arrivals hall by an airline representative and escorted to the kiosk where you will be driven to the boarding lounge for check in to your flight to Madikwe. The one hour flight will arrive in Madikwe and guests will be collected from Royal Madikwe Western Airstrip by our guide and transferred to the lodge at no extra charge – approximately 30 minute drive time. Shuttle flight times may vary by up to an hour, so please ensure to allow a minimum of 3-4 hours between connecting flights as neither the airline, nor Royal Madikwe will be held liable for missed connecting flights.

Luggage restrictions are very strict with an allowance of 20kg checked luggage per person in soft sided bags only as well as 5 kg hand luggage per person. For excess luggage, the complimentary luggage storage facility at the Federal Airlines lounge can be utilized, or an additional seat must be booked and is dependent on availability at the time of enquiring. Please do note that seats are limited and if flights are fully booked there is an option of Private Charter flights, or a Private Road Transfer.



### PRIVATE CHARTER FLIGHT

Private Charters can be arranged in the event of the Shared Shuttle Flights being fully booked, or for a more private and luxurious experience which includes a meet & greet facility whereby guests will be escorted off international flights through customs / immigration on arrival and driven to the boarding Lounge. Flight times are reasonably flexible to suit guests' requirements and dependent on flight and lodge operations. Please be sure to enquire with our reservations team about the possibility of an earlier check-in or later check-out as a surcharge may be applicable for transfers to / from the airstrip.



# THE ROYAL MADIKWE

LUXURY SAFARI LODGE

---

## PRIVATE ROAD TRANSFER OPTIONS

Please contact [reservations@royalmadikwe.com](mailto:reservations@royalmadikwe.com) for a personalized quote.

### PRIVATE ROAD TRANSFER

A private road transfer can be arranged to transfer guests to / from Royal Madikwe. Approximately 4.5 hours' drive from Johannesburg, approximately 3 hours' drive from Sun City and approximately 1.5 hours' drive from the Sir Seretse Khama Airport in Gaborone, Botswana. Please enquire for transfers from other destinations.

Please take note that Madikwe Game Reserve entry gates open at 06h00 and are locked at 18h00 in the evening, so please ensure to take these times into account when arranging your connecting flights in relation to travel times for road transfers and self-drive options.

### DRIVING YOURSELF

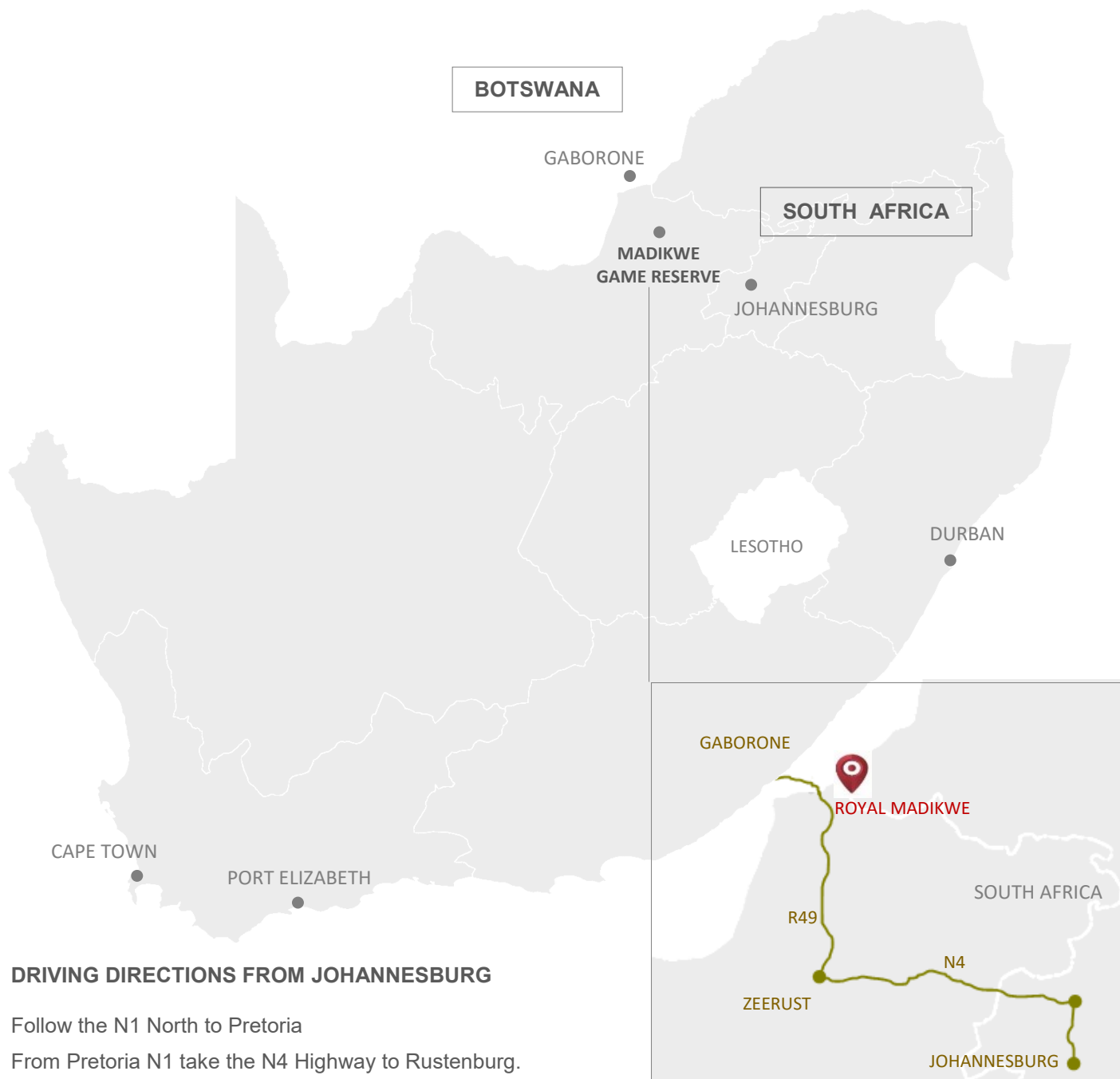
For the more adventurous, there is also the option of renting a vehicle at the airport and driving yourself to the lodge. This is a great way to see more of the country and the roads are generally in good condition, thus a 4x4 vehicle is not a requirement. We do advise using the driving directions herein in collaboration with Google Maps. Please take note that Madikwe Game Reserve entry gates open at 06h00 and are locked at 18h00 in the evening, so please ensure to take these times into account when arranging your connecting flights in relation to travel times for road transfers and self-drive options.



# THE ROYAL MADIKWE

LUXURY SAFARI LODGE

## MAP AND DIRECTIONS



### DRIVING DIRECTIONS FROM JOHANNESBURG

Follow the N1 North to Pretoria

From Pretoria N1 take the N4 Highway to Rustenburg.

Keep to the N4 which bypasses Rustenburg and head for Swartruggens.

From Swartruggens, continue to Zeerust. Ignore all signs to Madikwe before Zeerust and enter the town itself.

(Please call us when you reach Zeerust (t) +27(0)82 568 8867) At the 4<sup>th</sup> intersection into the town of Zeerust you will turn right into President Street. Travel 90km along this road towards Gaborone on the R49.

Look out for a sign board on your right indicating "Wonderboom Gate," Madikwe Game Reserve - turn right here.

Once through the boom-gate, take the first turn on your right at the sign indicating "Lodges" and follow the road until you see the Royal Madikwe sign on your left.



# THE ROYAL MADIKWE

LUXURY SAFARI LODGE

---

## SEASONS AND PACKING GUIDELINES



### Summer (December—February)

Summer is our rainy season and we experience some of the most breath taking thunderstorms in the Southern Hemisphere, which can continue for 10 minutes or up to 2 hours. As Madikwe is a semi-arid area, with an average annual rainfall of only 500mm, it does not typically rain every day and thunderstorms generally occur in the afternoons, however this is not always the case, and this may cause disruptions to the wifi and mobile phone connectivity. Daytime temperatures can vary from 25°C to 40°C, with an average of 31°C.

*Recommended Clothing...* Light cotton / linen fabrics are recommended for the hot daytime temperatures and a light jumper for the game drives. Short trousers, summer dresses, swimming trunks / costume and open toe sandals are recommended.

### Autumn (March—May)

One can still expect some rainfall in Autumn, but much less than in summer time. By now, the daytime temperatures have dropped down to 20°C, with a maximum of 31°C. The early morning and afternoon game drives are a little cooler, but we do provide cozy blankets on game drives for extra comfort.

*Recommended Clothing...* Light summer clothing will still be required, but we recommend a warm jumper, long trousers and closed shoes for the game drives which can be a little cooler.

### Winter (June—August)

Winter in Madikwe boasts lovely warm days with temperatures between 15°C and 25°C – much like European Summer temperatures! By now, the early morning and afternoon game drive temperatures have dropped and can be as low as 10°C to 0°C on some mornings, with an average of 6°C.

*Recommended Clothing...* Long trousers, long sleeve shirt, jumper, closed shoes and a warm jacket, scarf, gloves and a woolly hat for the cooler game drives is recommended, as well as some lighter clothing for the warmer daytime temperatures.

### Spring (September—November)

There is a definite change in temperature and, although the early morning and afternoon game drives still present a chill, midday temperatures range from 20°C to 30°C with an average of 25°C most days.

*Recommended Clothing...* Trousers and a warm jacket are still required for the game drives, but lighter clothing can be worn during the warmer midday temperatures. Both closed shoes and sandals will be useful.

**All year round necessities...** Sun hat | Sun glasses | Sun block & lip balm | Closed shoes for Nature walks | Camera with extra memory card | Extra batteries / chargers | Binoculars



# THE ROYAL MADIKWE

LUXURY SAFARI LODGE

## HEALTHCARE AND DOCUMENTATION

### MEDICAL REQUIREMENTS

Madikwe Game Reserve is a Malaria FREE area, therefore no anti-Malaria medication is required. We have a medical box available with basic medication for your convenience, however, if you are taking any prescribed / chronic medication, please ensure that you have an additional supply available in case of any unforeseen circumstances due to our remote location.



A paramedic is stationed in the reserve and can be called out to the lodge in necessary situations. Emergency Medical evacuation is also available for emergency cases, but each case is assessed individually and therefore no guarantees are given. We do advise that all guests take out personal travel insurance.

### DOCUMENTATION REQUIRED

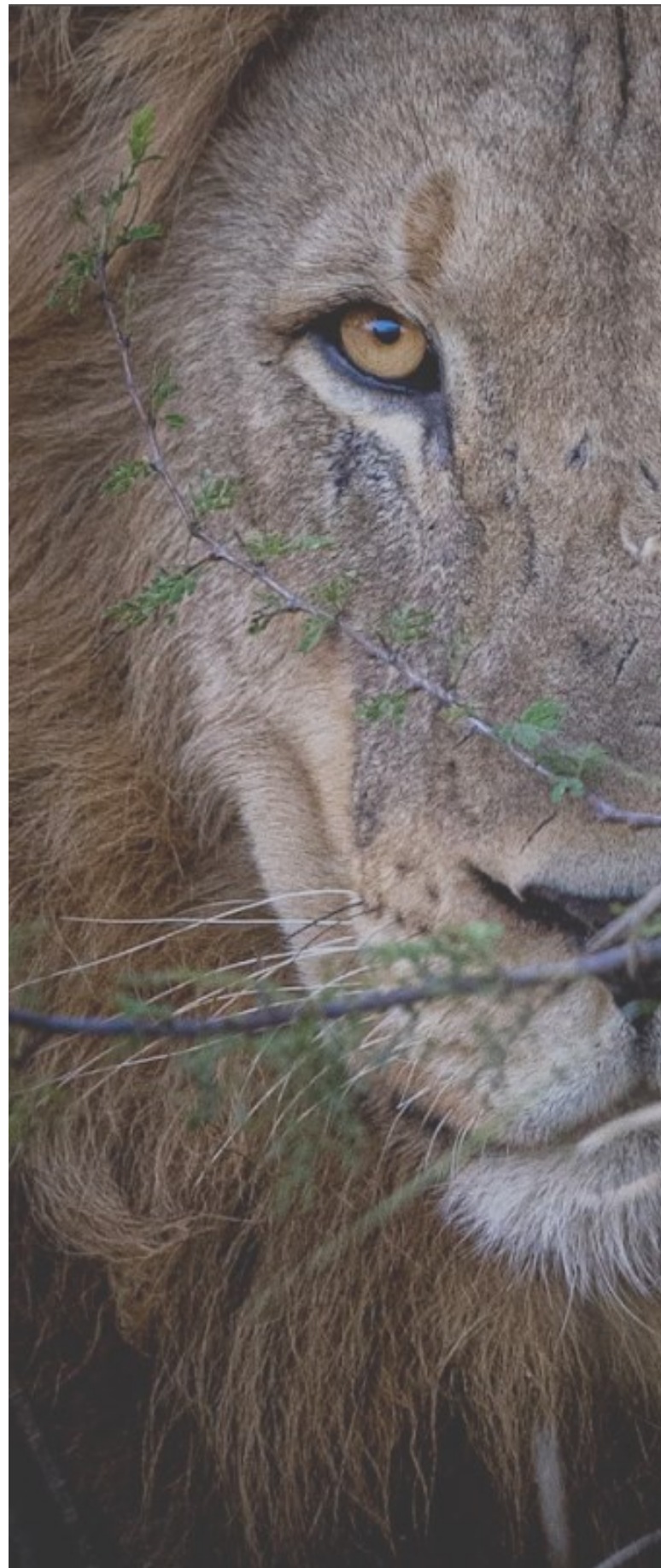
Please ensure you check visa requirements prior to departure. All guests visiting South Africa are required to have a minimum of two blank pages in their passport to allow the entry visa to be issued and failure of this requirement will result in entry being denied.





# THE ROYAL MADIKWE

LUXURY SAFARI LODGE



## RESERVATIONS

[reservations@royalmaidikwe.com](mailto:reservations@royalmaidikwe.com)

+27(0)82 787 1314

## MARKETING

+27(0)82 787 1314

[marketing@royalmaidikwe.com](mailto:marketing@royalmaidikwe.com)

## LODGE DIRECT

[info@royalmaidikwe.com](mailto:info@royalmaidikwe.com)

+27(0)82 568 8867

[www.royalmaidikwe.com](http://www.royalmaidikwe.com)

